

DEEP DIVES SUSTAINABILITY TOPICS

ST14 Community Investment

Community Investment and Social Impact

As part of its long-standing corporate commitment to responsible business practices, Kelington supports community development and responds to societal needs through a range of community investment and corporate social responsibility (“CSR”) initiatives. The Group collaborates with non-governmental organisations (“NGOs”), educational institutions and local communities to develop programmes that generate positive social impact while supporting a sustainable operating environment.

In addition to supporting local suppliers and local employment opportunities, Kelington allocates resources to initiatives that focus on underprivileged communities, education, healthcare and environmental stewardship. These initiatives are guided by the Group’s Community Investment Policy and overseen by the SWG, which reviews community priorities across Kelington’s operating regions to ensure that programmes remain relevant and impactful.

In FY2025, Kelington spent RM26,000 on community and environmental initiatives.

The SWG periodically assesses emerging social and environmental challenges within the Group’s operating environment to identify opportunities for meaningful engagement. Community programmes are then developed in line with the Community Investment Policy, with the objective of creating positive outcomes for both local communities and the Group’s stakeholders.

Education Support Target and Progress

Kelington has established a target to provide access to quality education for at least 100 disadvantaged youth by 2030 through scholarships, mentorship programmes and partnerships with educational institutions.

To support this target, the Group participates in the Sambung Sekolah Programme, which provides financial assistance and support to students from underprivileged backgrounds to continue their secondary education.

To date, Kelington has supported a cumulative total of 26 students under the Sambung Sekolah Programme. This represents approximately 26% progress toward the Group’s 2030 target.

The Group will continue to collaborate with education-focused organisations and community partners to expand access to educational opportunities for disadvantaged youth across its operating regions.

DEEP DIVES SUSTAINABILITY TOPICS

- ST 14 COMMUNITY INVESTMENT (CONT'D)

Supporting Education for Underprivileged Students

For the fifth consecutive year, Kelington continued its support for Project Sambung Sekolah, a collaborative initiative with the Haematology Department of Hospital Ampang, The Max Foundation, and Max Family Society Malaysia.

Through its contribution to Project Sambung Sekolah, Kelington reaffirms its commitment to education as a catalyst for social mobility and long-term community development. The Group believes that access to education is fundamental to building resilient communities and creating positive, lasting societal impact beyond the classroom.

Projek Sambung Sekolah
MAX SCHOOLING Since 2014
PROGRESS REPORT
 As of 31st December 2025

Some children carry more than schoolbags. They carry the weight of a parent's illness. Projek Sambung Sekolah (PSS) supports children whose families are navigating cancer treatment in public hospitals, ensuring they don't drop out or fall behind. **With regular communication and continuous monthly RM 100 financial support, children are able to stay engaged in learning and remain in school.**

Since 2014 **570** students from **303 families** across Malaysia

As of 2025, a total of **RM2,313,600** has been disbursed since 2014

SUPPORT PROVIDED IN 2025

- 451 STUDENTS
- 265 FAMILIES

2025 PROGRAM HIGHLIGHTS

- 54 new students enrolled in 2025
- 32 new families supported in 2025

STUDENT Spotlight

Hasaad is a 10-year-old student from Kedah who has been supported by the PSS since 2023. He actively involved in sports and inter-school running competitions. Hasaad demonstrates resilience and responsibility beyond his age, supported by his family, teachers, and the PSS.

“We are really grateful for the financial assistance from PSS, which has helped cover our children's school expenses. The attention and care we received through regular check-ins, and having someone to talk to, have meant so much to me.”

- Dawzana, mother of PSS recipients from Kedah

Want to help more children stay in school? Get in touch with us: admin@pssembang.org | www.psssembang.org | +603 783 8844 / +603 301 9888 / +603 848 3008

Project by: **The Max Foundation**, **Max Family**, and **Department of Haematology, Hospital Ampang**

PSS_030206

Core Liver Baby Program – China

Kelington Shanghai continued supporting the Core Liver Baby Program, led by the China Soong Ching Ling Foundation. In 2025, Kelington contributed RMB30,000 helping to fund critical liver transplant surgeries for underprivileged children at Renji Hospital, improving access to life-saving medical treatment and supporting vulnerable families.



DEEP DIVES SUSTAINABILITY TOPICS

- ST 14 COMMUNITY INVESTMENT (CONT'D)

Education and Talent Development

In 2025, Kelington strengthened its engagement with academic institutions through a strategic partnership with the National University of Malaysia (Universiti Kebangsaan Malaysia (“UKM”)). Our involvement included:

- **Guest Lectures:** Delivered 2 sessions covering Technical and Soft Skills as part of the Program Cuti Semester – Soft Skills for Future Engineers.
- **Internship Support:** Provided internship preparation guidance and mentorship to students.
- **Career Fair Participation:** Engaged more than 50 students at HIKEF 2025, offering insights into engineering careers and industry expectations.
- **Student Development:** Provided university students with experience and insights through external programs such as the 2025 iCapital.biz Berhad Investor Day.

Our Executive Chairman, Ir. Raymond Gan shared industry insights and inspire future engineers, while technical leaders delivered sessions bridging academic theory with real-world engineering practice. The Group also supported international academic collaboration by attending the UKM–University of Duisburg-Essen Memorandum of Understanding signing, reinforcing our role in advancing engineering expertise and knowledge exchange.

Beyond project delivery, Kelington contributes to industry development through academic–industry collaboration and knowledge exchange. In 2025, the Group supported initiatives focused on sustainability-linked technologies, including academic–industry interviews on carbon capture solutions and collaboration on LCO₂ production plant exposure, reinforcing Kelington’s role as a knowledge contributor within the engineering ecosystem.



DEEP DIVES SUSTAINABILITY TOPICS

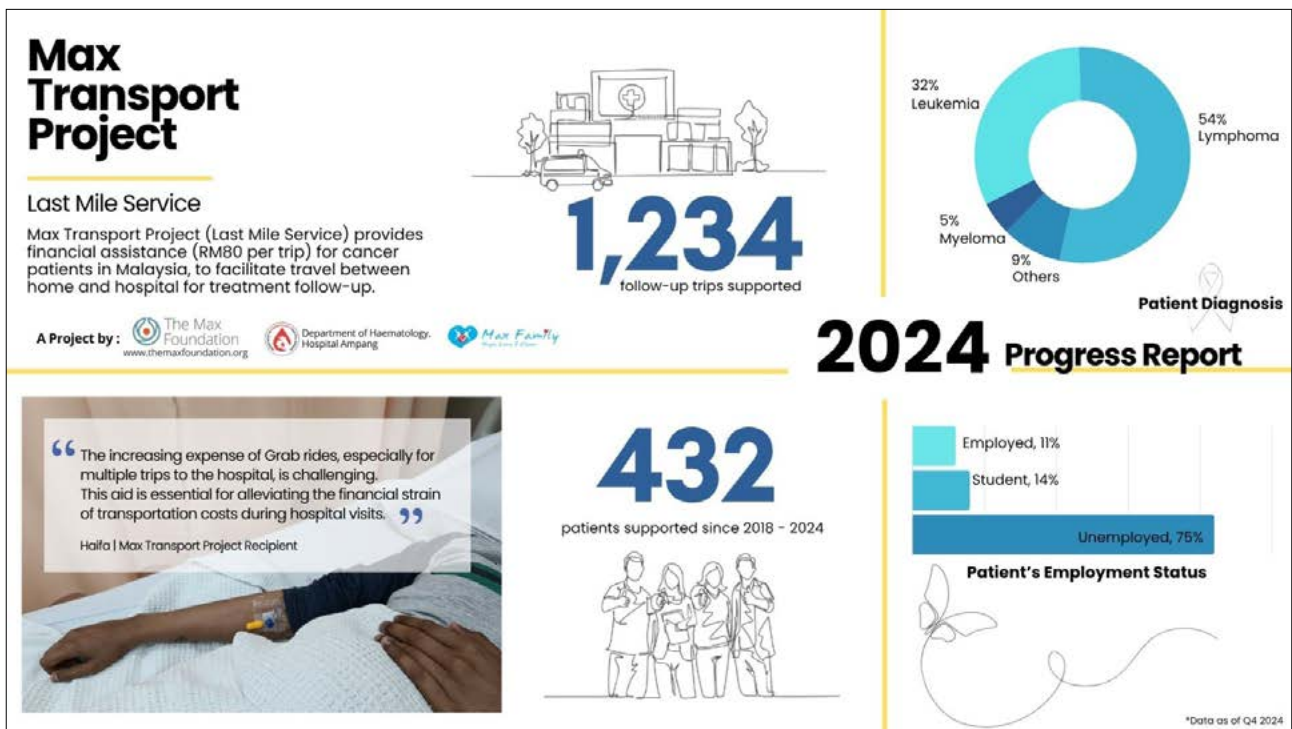
- ST 14 COMMUNITY INVESTMENT (CONT'D)

Community Health & Care – When Care Matters Most

Kelington is committed to supporting the health and well-being of the communities where we operate. In 2025, we implemented initiatives that help patients and families access medical care with less stress, demonstrating our belief that sustainability includes how we show up for humanity.

Key initiatives included:

- **Max Transportation Project** – funding transportation for cancer patients to and from Hospital Ampang for treatment and follow-ups, helping ease logistical and financial burdens. In FY2025, we facilitated more than 10 trips for more than 10 patients, and contributed RM1,000 in sponsorship to support the initiative.



- **Blood Donation Drive** – organised in Singapore to support national blood banks, with participation from 13 employees, collecting a total of 10 units of blood (approximately 4,550 mL).

